

SYDNEY



Student Accommodation Guide



07 3860 0997 or 07 3860 0915



studentservices@aviationaustralia.aero

Homestay

Australian Homestay

Network [AHN]

Australian Homestay Network endeavour to place students within easy travelling distance of their education provider (up to 1 hour by public transport). Hosts are carefully selected to ensure that our students are placed in environments that are not only safe and comfortable but also warm and welcoming. Students can expect to enjoy a supportive, friendly home while adjusting to Australian culture and the community they will be living in.

Services Provided

- Homestay management and support throughout the entire homestay experience
- Extensive national criminal background checks for hosts
- Student support services including banking and transportation
- Comprehensive online training and orientation for hosts and students
- Professionally staffed 24/7 critical incident contact centre
- Management of all homestay payments for students and hosts
- Airport Transfer Service (charges apply)

Included

- Utilities [electricity, gas and water]
- Meal plans
- Furnished accommodation
- Internet

* Minimum stay conditions apply



Homestay gives you an opportunity to live with an Australian family in their home. Homestay can be a good option for when you first arrive, as you will have a supportive family environment to help you settle in. Some homestay options include meals and others are self-catered so you can choose an option that suits your needs.



Contact Details



+61 2 9264 0470



sydney@homestaynetwork.org



<https://www.homestaynetwork.org>

Homestay

Meridian Homestay Services

Meridian Homestay Services commit to 'always put the student first' and to provide high quality, affordable Homestay placements.

Services Provided

- Welcome and orientation kit upon arrival
- 24-hour emergency support service
- All employees and contractors of Meridian hold a working with children check certificate
- Airport transfer service (additional cost)
- Minor issues/complaints resolved within 72hrs
- Major issues/complaints resolved within 24hrs
- Student relocated within 12hrs if major issue cannot be resolved

Included

- Breakfast & dinner (7 days a week)
- Student personal effects and liability insurance
- Lunch on weekends
- Orientation kit
- Furnished accommodation

*Minimum stay: 1 week



Homestay gives you an opportunity to live with an Australian family in their home. Homestay can be a good option for when you first arrive, as you will have a supportive family environment to help you settle in. Some homestay options include meals and others are self-catered so you can choose an option that suits your needs.



Contact Details



+61 2 9909 2960



MHS@meridianhomestay.com.au



<https://www.meridianhomestay.com.au>

Optional Catering

New College Village

New College Village is dedicated student accommodation located in Kensington, NSW. New College Village offers short term accommodation throughout the year with the choice of a single room or double studio room. The village is close to public transport and provides students with convenient access to eateries, supermarkets, a convenience store, doctors and chemist.

Services Provided

- Entry into New College is restricted by card access only
- Residential Advisor on call after hours
- Weekly housekeeping (bed linen, towels and soap supplied)
- Dining room, serving 3 meals a day (additional cost)

Facilities

- Café
- Internet access
- Air-conditioned common room
- Telephone (incoming calls free)
- Laundry
- Games room
- Small number of single and double rooms with ensuite bathrooms available



Included

- Fully furnished accommodation
- Common kitchenette
- Shared bathrooms
- Utilities (electricity, gas and water)
- Internet (wireless with unlimited download)

Minimum Stay

2 nights



Contact Details



+61 7 3862 0850



Online enquiries: <https://newcollege.unsw.edu.au/venues-accommodation/guest-accommodation/enquiries>



<https://www.newcollege.unsw.edu.au/sydney/casual-accommodation>

Self Catering

Mandelbaum House

Mandelbaum House is a boutique residential college (36 rooms) located on the University of Sydney campus.

The college offers students the choice of a basic room with single bed and fan or a studio room with a double bed and air conditioning. Students can enjoy easy access to amenities such as libraries, a sports & aquatic centre, shops, cafes and public transport.

Services Provided

- Bed linen and towels
- Weekly laundry service
- Onsite pastoral and practical care
- Secure building access

Facilities

- Library
- Lounge area
- Coin operated laundry
- Games room
- Pool table & table tennis table
- Roof top table and chairs
- Communal areas for residents to study, socialise and relax
- BBQ area



Included

- Fully furnished accommodation
- Shared bathrooms
- Utilities (electricity, gas and water)
- Meals available (charges apply)

Minimum Stay

- 2 nights



Contact Details



+61 2 9692 5200



admin@mandelbaum.usyd.edu.au



<https://www.mandelbaum.usyd.edu.au/>

Self Catering

Whitehall Sydney

Whitehall Sydney Student Accommodation is a small, dedicated student accommodation property, located in Newtown.

Students can choose from a single or double dormitory style room with secure swipe card access. Whitehall Sydney Student Accommodation is close to public transport and provides students with convenient access to amenities such as supermarkets, banks, cinemas, restaurants and gyms.

Services Provided

- Security swipe card access to the building as well as your own room
- Weekly clean
- Off-site care takers

Facilities

- Communal laundry with free washing machine and drying line
- Private communal courtyard
- Shared kitchen
- Shared dining and lounge
- Shared bathrooms



Included

- Fully furnished accommodation
- Ducted air conditioning
- Shared bathrooms
- Utilities (electricity, gas and water)
- Internet (wireless with unlimited download)

Minimum Stay

3 months



Contact Details



0432 713 794



jennifer.hancox@optusnet.com.au



<https://whitehall-sydney-student-accommodation.business.site/>

Self Catering

Furnished Property

Furnished Property provides students with a range of options across Sydney, from single apartments to larger student share houses. Each house will have different facilities so please be sure to check the website for full details.

Services Provided

- House managers onsite to assist students with any needs
- Room choices—choose from single, double, triple and ensuite bathrooms

Facilities

- Outdoor courtyards
- Rooftop terraces
- Ensuite bathrooms



Included

- Fully furnished accommodation
- Communal kitchens & living areas
- Utilities (electricity, gas and water)
- 10GB Internet (upgrade to unlimited available)

Minimum Stay

1 month



Contact Details



1300 652 826



sales@furnishedproperty.com.au



<https://furnishedproperty.com.au/>

Self Catering

Miguel Codero Residence

Miguel Codero Residence (MCR) is located in Camperdown in Sydney's inner west. MCR residence offers a choice of furnished studios and multi-share apartments. Just across the road from the residence is a sporting oval and outdoor gym. Students only have a 2-minute walk to several cafes and a 15-minute walk to all essential facilities such as grocers, retailers and shopping centre.

Services Provided

- 24-hr access to support
- Secure key-card access

Facilities

- Communal lounge areas
- Foosball & table tennis
- Communal study area
- BBQ area
- Media facilities
- Recreation room with PS4, board games and TV
- Free bicycle hire
- Close to public transport
- Coin operated laundry
- GoGet hire cars
- New onsite gym opening 2021



Included

- Fully furnished accommodation
- Utilities (electricity, gas and water)

Minimum Stay

Short stays available, contact the residence directly for further information.



Contact Details



1300 275 228 or
SMS 0427 522 268



Live chat via the website



<https://www.acu.edu.au/student-life/student-accommodation/sydney-accommodation>

Self Catering

Iglu

Iglu is purpose-built student accommodation, located in Redfern. Students have a choice of room styles including 4,5 and 6-bedroom share apartments and studio rooms. Iglu is conveniently located close to every amenity including public transport, shops and food outlets.

Services Provided

- CCTV
- Electronic card access
- 24 x 7 onsite support
- Resident events program

Facilities

- Unlimited Wi-Fi
- Lounge and TV areas
- Bicycle storage
- Study tables
- Table tennis table
- Terraces and BBQ area
- Meeting rooms
- Laundry
- Gym & exercise area

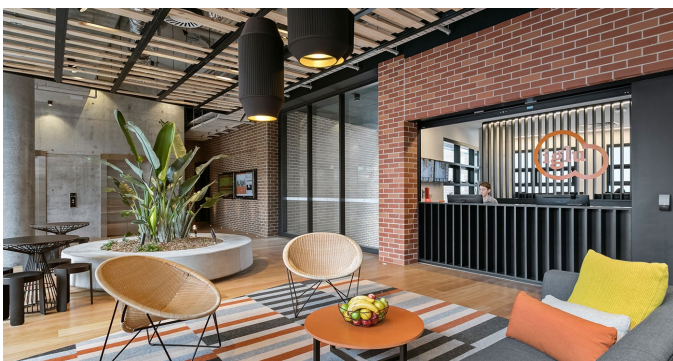


Included

- Fully furnished accommodation
- Private bathroom
- Utilities (electricity, gas and water)
- Unlimited Wi-Fi

Minimum Stay

1 month



Contact Details



+61 2 8024 8630



redfern@iglu.com.au



<https://iglu.com.au/properties/sydney/redfern/>

Hotel Accommodation

Ibis Budget St Peters

ibis budget St Peters is conveniently located within easy reach of Sydney's city centre as well as training. Public transport is close by and there is easy access to most amenities.

Services Provided

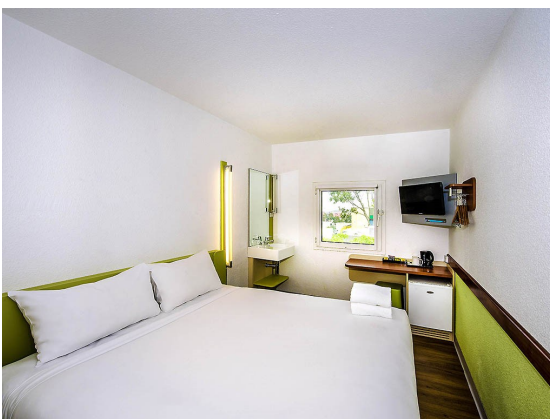
- Wi-Fi Internet Access (charges apply)
- Parking (charges apply)

Facilities

- Free parking
- Guest laundry
- Air-conditioned room
- TV
- Desk
- Wi-Fi (charges apply)
- Breakfast available



ibis budget St Peters offers a convenient, affordable option that offers great accommodation at affordable prices. Guests staying at this contemporary Sydney hotel can choose from a range of guest room configurations, which include options for up to two guests, and up to three guests. Each guest room at the hotel features a well-appointed private ensuite, comfortable bedding for a restful night's sleep, air conditioning, opening windows, a TV and an alarm clock.



Contact Details



+61 2 9519 0685



H2699@accor.com



<https://iglu.com.au/properties/sydney/redfern/>

Independent Living

Share House



[Flatmates.com.au](https://flatmates.com.au)

Flatmates.com.au is a useful tool for those students looking to move into a share house. The website allows you to filter your search by suburb, price and room specifications (furnished or unfurnished).



<https://flatmates.com.au/>



Independent Accommodation

[Hometogo](https://www.hometogo.com.au)



hometogo compares over 600 providers to offer the best rate on short term accommodation. You can filter your search by suburb to find a range of available options.



<https://www.hometogo.com.au/mascot/>



[Realestate.com.au](https://www.realestate.com.au)



Find independent accommodation across Brisbane using one of Australia's most popular real estate [portals](#).



<https://www.realestate.com.au/rent/>



Important Information

Fair Trading



We strongly recommend that students consult Fair Trading NSW to ensure that they understand the rights and responsibilities involved in signing leases in Sydney.

Landlords and tenants have rights and responsibilities that guide what they can do during a tenancy.

Good to know

Students are encouraged to review the 'Starting a tenancy' information at: <https://www.fairtrading.nsw.gov.au/housing-and-property/renting/starting-a-tenancy> before signing a lease.



Travel Considerations



Students should consult the Transport NSW website to determine public transport options available from prospective accommodation to school.

The home page includes a journey planner, which commuters can use to find out the distance, travel time and cost involved in travel anywhere within the TRANSLink network.



	Australia	13 32 20
	International	+61 2 9895 0111
	https://www.fairtrading.nsw.gov.au/housing-and-property/renting	

	Australia (24/7)	131 500
	https://transportnsw.info/trip#/	